

TOWN AND COUNTRY PLANNING ACT 1990 (AS AMENDED)

TOWN AND COUNTRY PLANNING (GENERAL PERMITTED DEVELOPMENT)
(ENGLAND) ORDER 2015 AS AMENDED

DIRECTION MADE UNDER ARTICLE 4(1) WITHOUT IMMEDIATE EFFECT

WHEREAS **Blackburn with Darwen Borough Council** ("the Council") being the appropriate local planning authority, are satisfied following a resolution made by Blackburn with Darwen Borough Council on 28 July 2022 that it is expedient that development of the description(s) set out in the First Schedule below should not be carried out within the lands described in the Second Schedule shown edged red on the attached sealed plan, unless planning permission is granted on an application made under Part III of the Town and Country Planning Act 1990 (as amended)

1. NOW THEREFORE the said Council in pursuance of the power conferred on them by article 4(1) of the Town and Country Planning (General Permitted Development) (England) Order 2015 as amended ("the Order") hereby direct that the permission granted by article 3 of the said Order shall not apply to the development on the said land of the description(s) set out in the Second Schedule below.
2. AND NOW FURTHERMORE the said Council in pursuance of the power conferred on them by article 4(1)(13) of the Order hereby cancels the article 4 direction referred to in the Third Schedule below.
3. This Article 4 Direction referred in paragraph 1 above, and the subsequent cancellation of the article 4 direction listed in Schedule 3 and referred to in paragraph 2 above will both come into force, subject to confirmation by the Council, on 9 August 2023.

Made under the Common Seal of Blackburn with Darwen
Borough Council this 8th day of August 2022
The Common Seal of the Council was affixed to this Direction
in the presence of


.....
Authorised Officer
Resolution made at Council Forum on 28 July 2022



Confirmed under the Common Seal of Blackburn with Darwen
Borough Council this 28th day of July 2023
The Common Seal of the Council was affixed to this Direction
in the presence of


.....
Authorised Officer
Resolution made at Council Forum on 20 July 2023



FIRST SCHEDULE

Town and Country Planning (General Permitted Development) (England) Order 2015 (as amended)

Schedule 2, of Part 3

Changes of Use

Class L (b)

Development consisting of a change of the use of a building - from a use falling within Class C3 (dwellinghouses) of the Schedule to the Town and Country (Use Classes) Order 1987 (as amended), to a use falling within Class C4 (houses in multiple occupation) of that Schedule.

SECOND SCHEDULE

Properties within the area of Blackburn with Darwen Borough Council to which this Direction relates:

All those properties situated within the areas outlined in red on the plan attached to this Direction in use as dwellinghouses where such use falls within Class C3 of the Schedule to the Town and Country Planning (Use Classes) Order 1987 (as amended). The Plan(s) in the Direction specify the precise areas affected, but in general, may be described as within urban areas as designated by emerging Policy CP2 of Blackburn with Darwen Local Plan 2021-2037 as at 8 August 2022.

THIRD SCHEDULE

Direction made under Article 4(1) of the Town and Country Planning (General Permitted) Order 1995 (as amended) by Blackburn with Darwen Borough Council on 17 February 2012 which was confirmed on 7 February 2013.


Blackburn with Darwen Borough Council Proposed Article 4 Direction



August 2022



1:50000


AUTHORISED OFFICER


AUTHORISED OFFICER
28.7.23

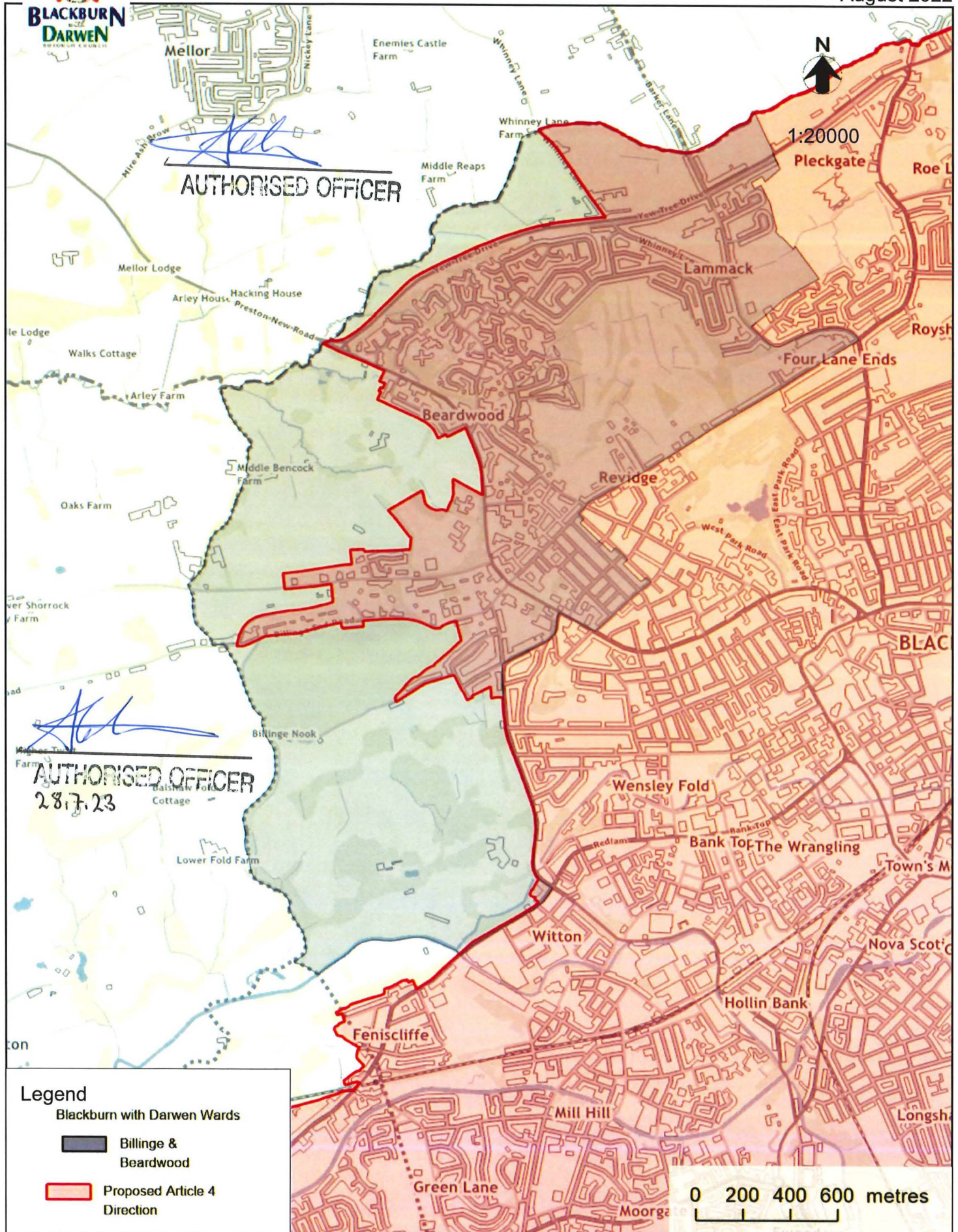
-  Proposed Article 4 Direction
-  Borough Boundary

0 500 1000 1500 metres



Blackburn with Darwen Borough Council Proposed Article 4 Direction - Billinge & Beardwood

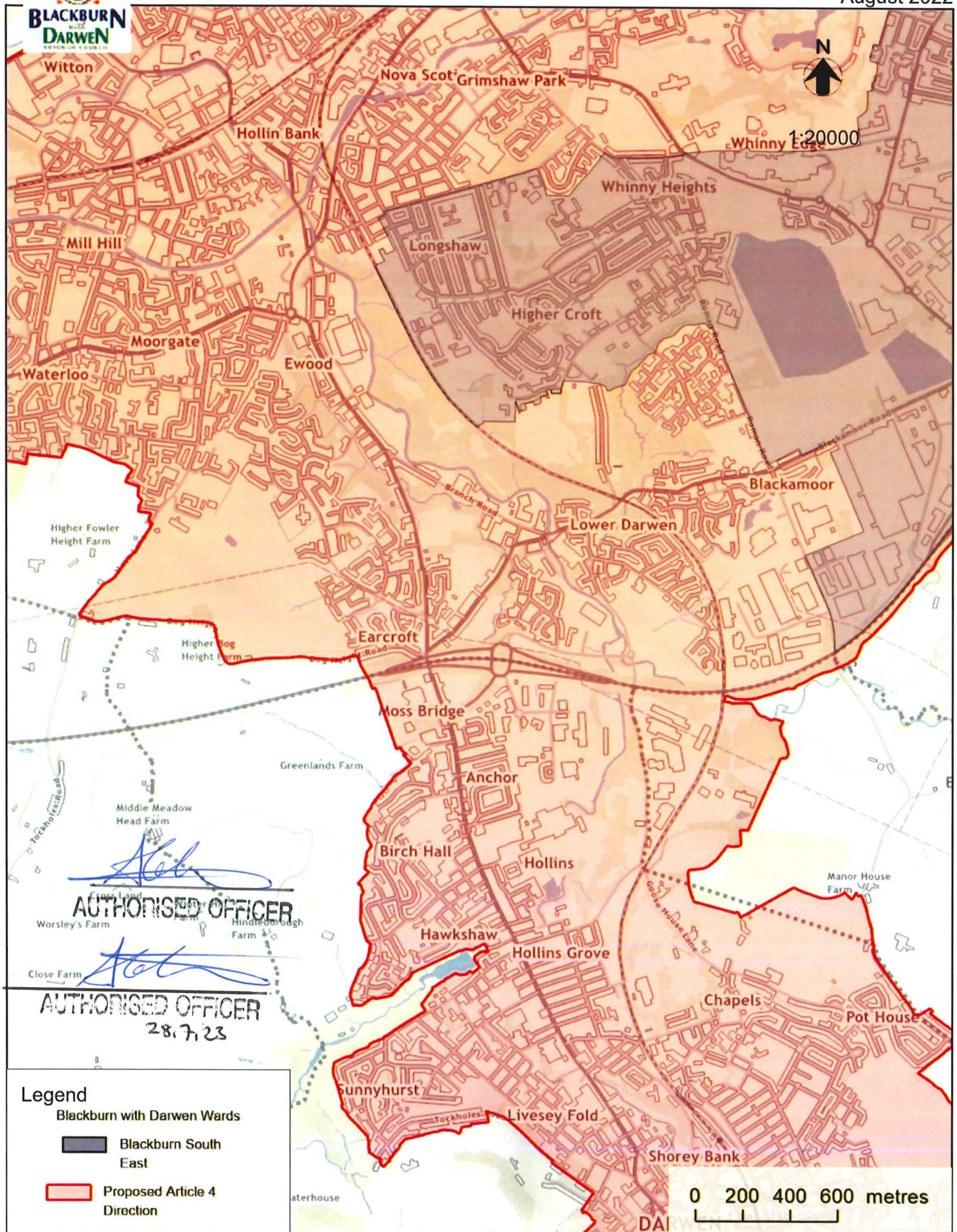
August 2022





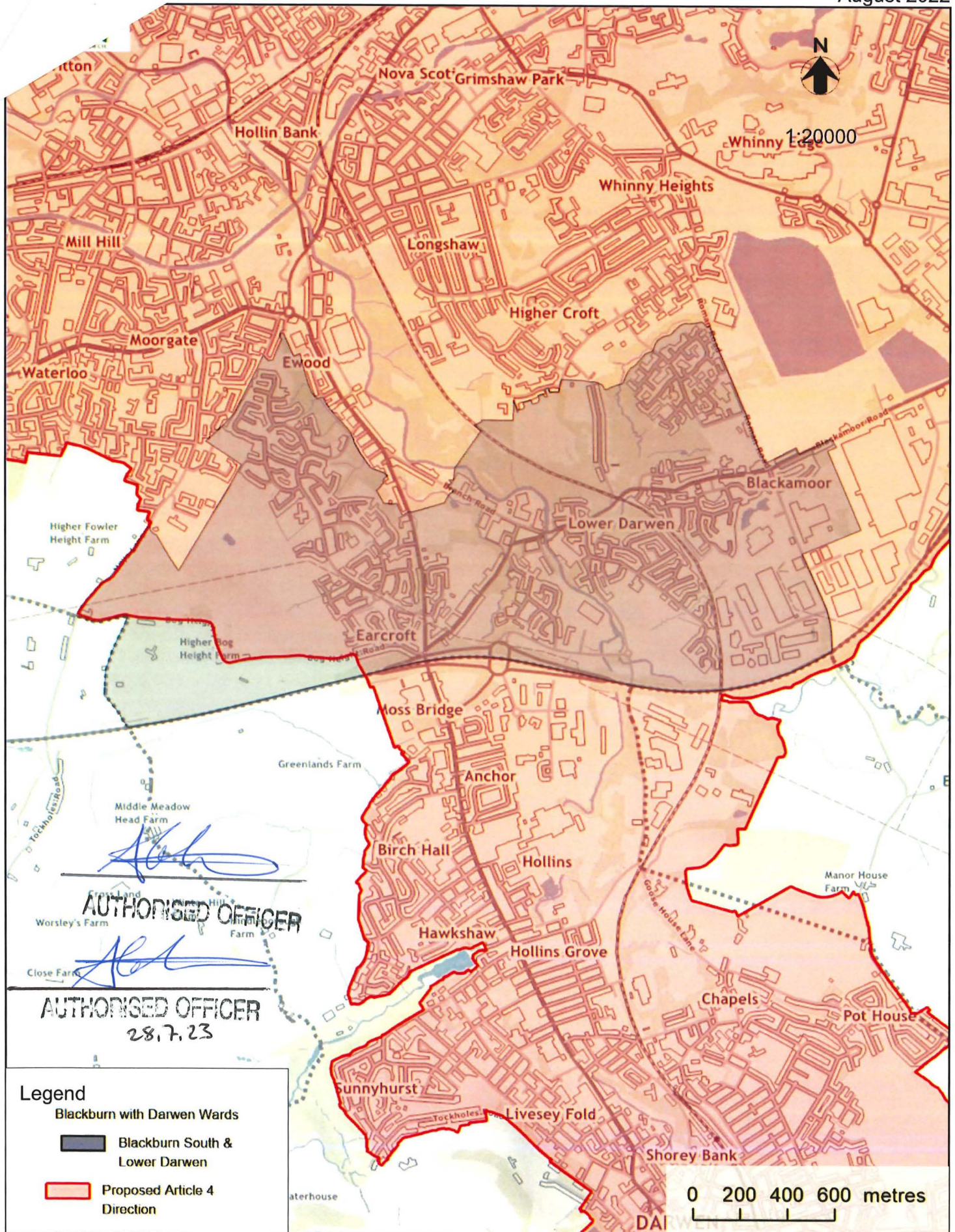
Blackburn with Darwen Borough Council Proposed Article 4 Direction - Blackburn South East

August 2022



Blackburn with Darwen Borough Council
Proposed Article 4 Direction - Blackburn South & Lower Darwen

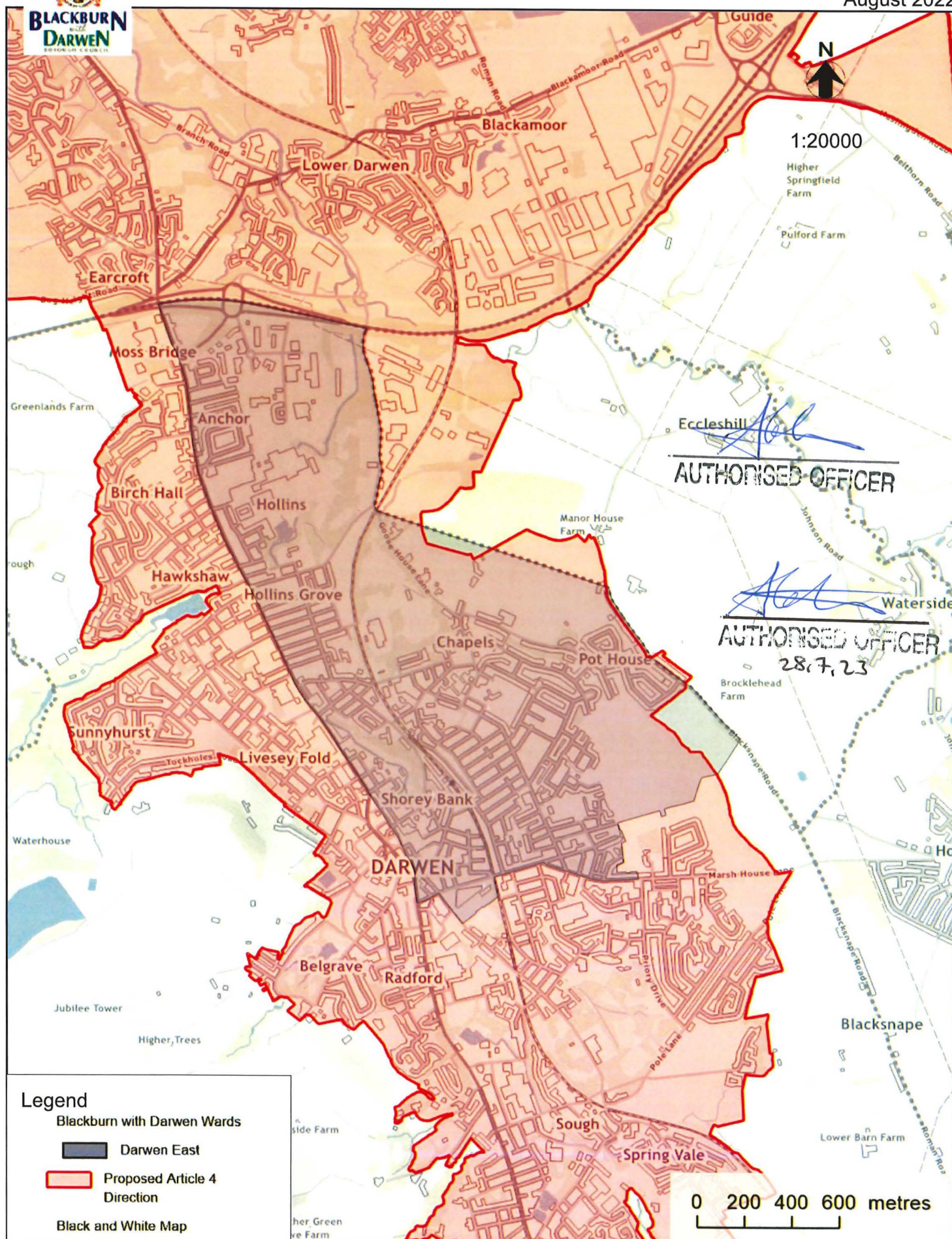
August 2022





Blackburn with Darwen Borough Council Proposed Article 4 Direction - Darwen East

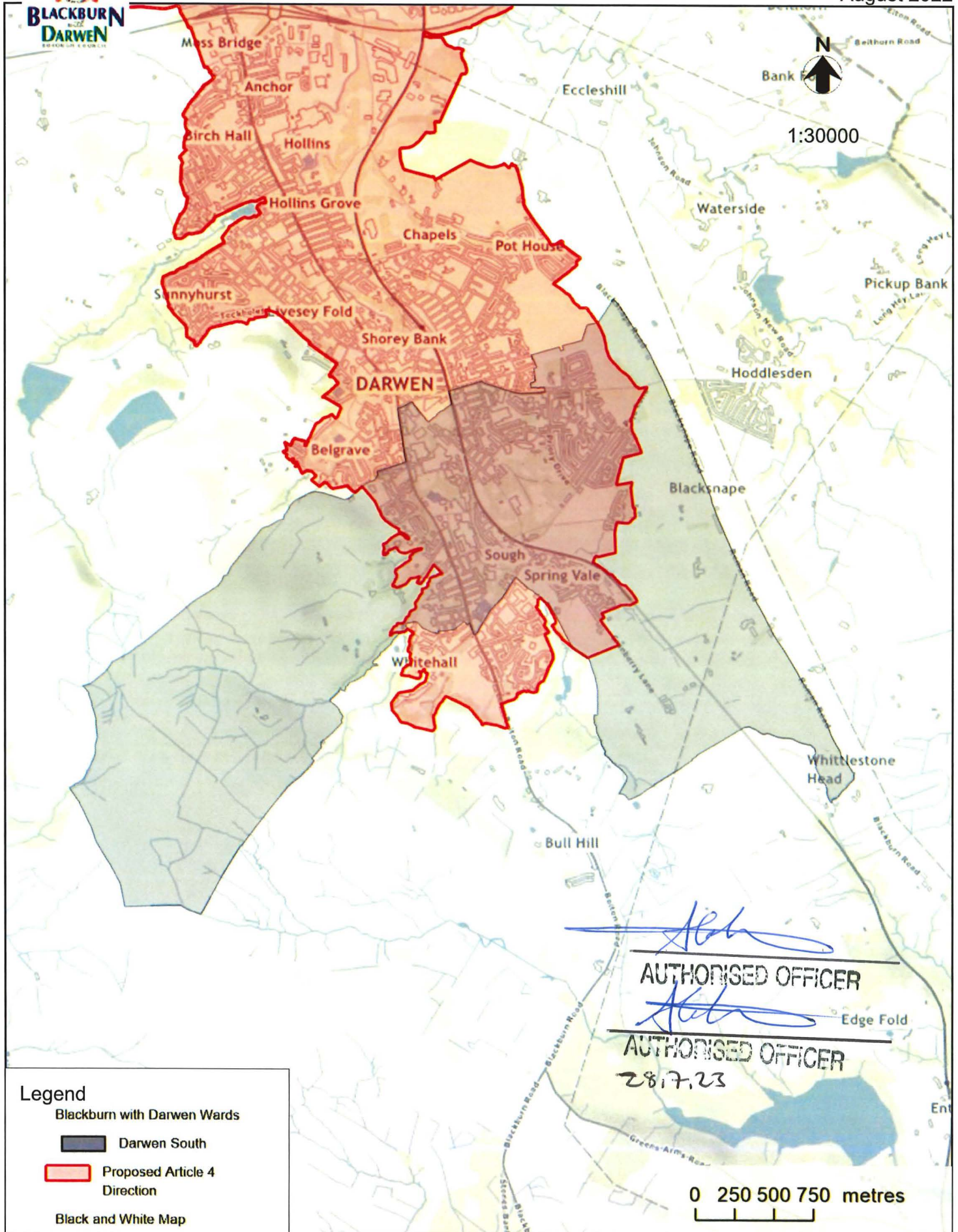
August 2022





Blackburn with Darwen Borough Council Proposed Article 4 Direction - Darwen South

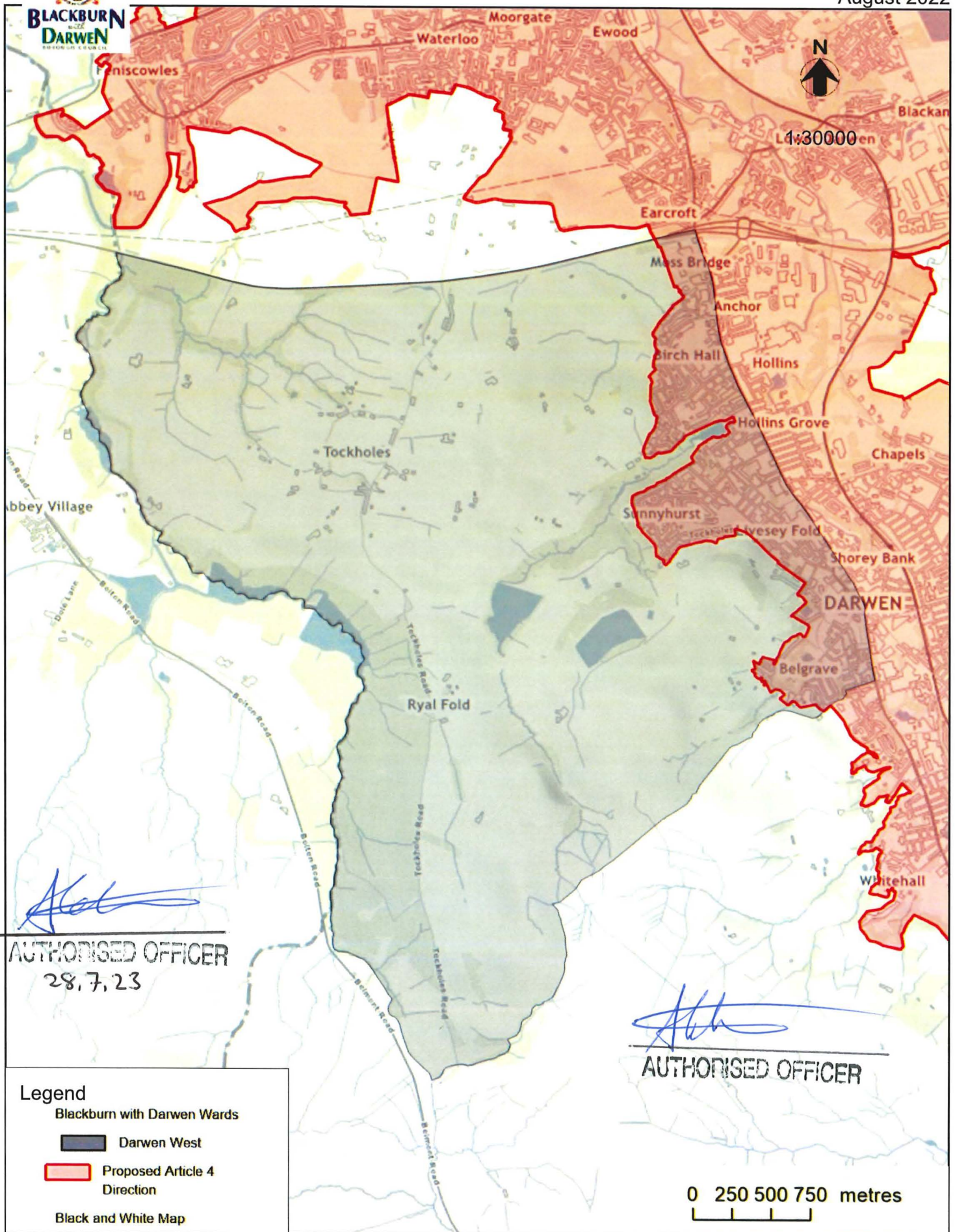
August 2022





Blackburn with Darwen Borough Council
Proposed Article 4 Direction - Darwen West

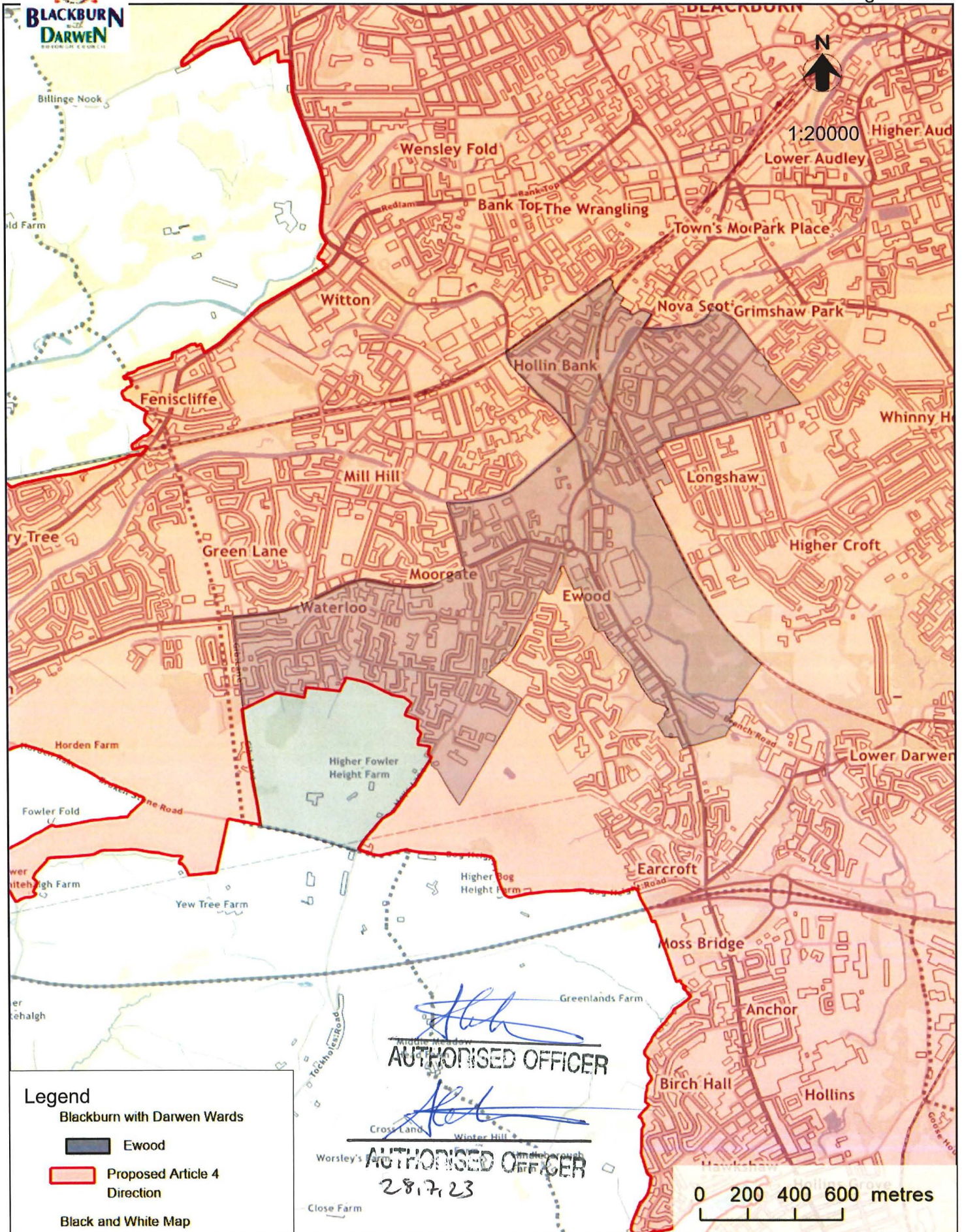
August 2022





Blackburn with Darwen Borough Council Proposed Article 4 Direction - Ewood

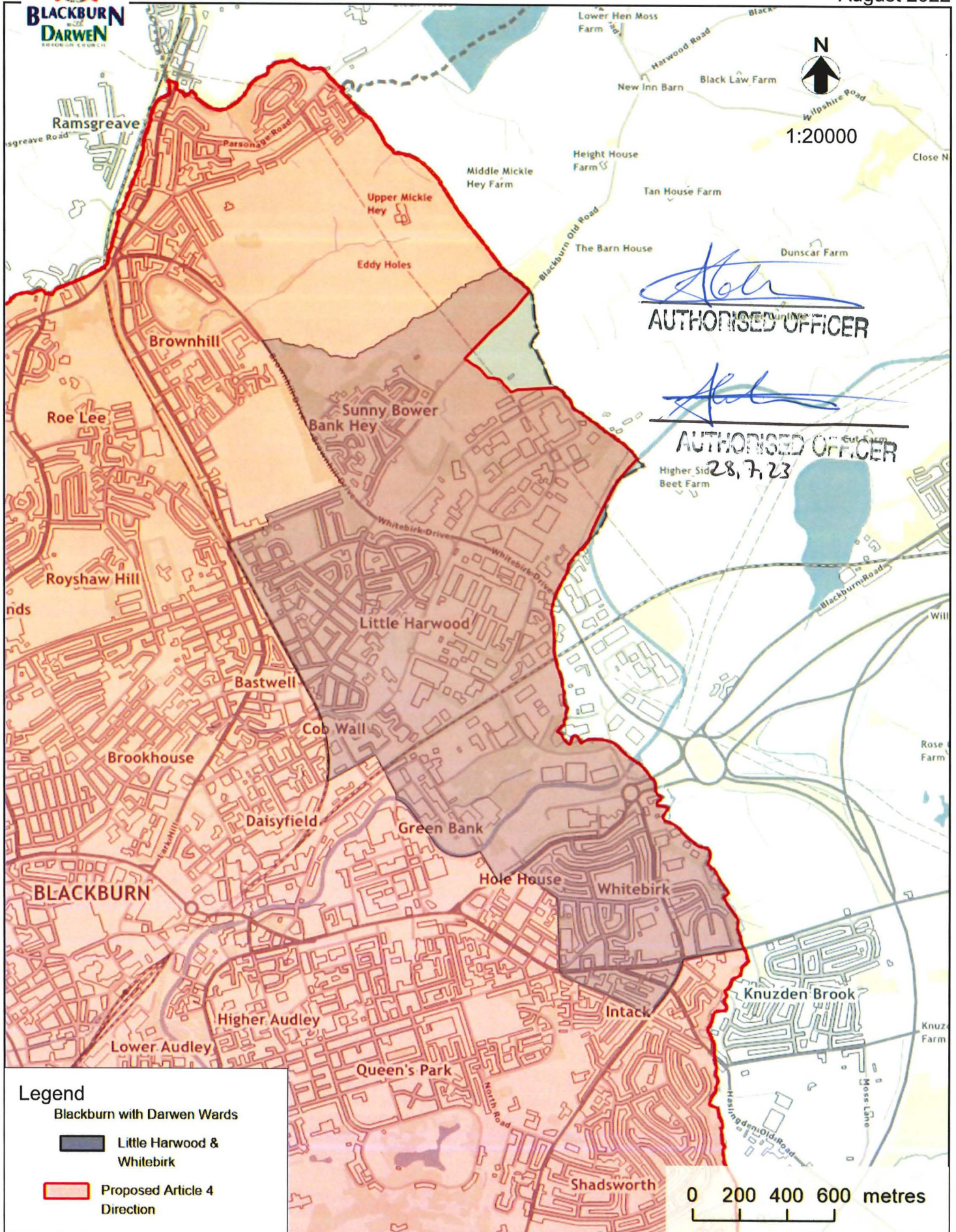
August 2022





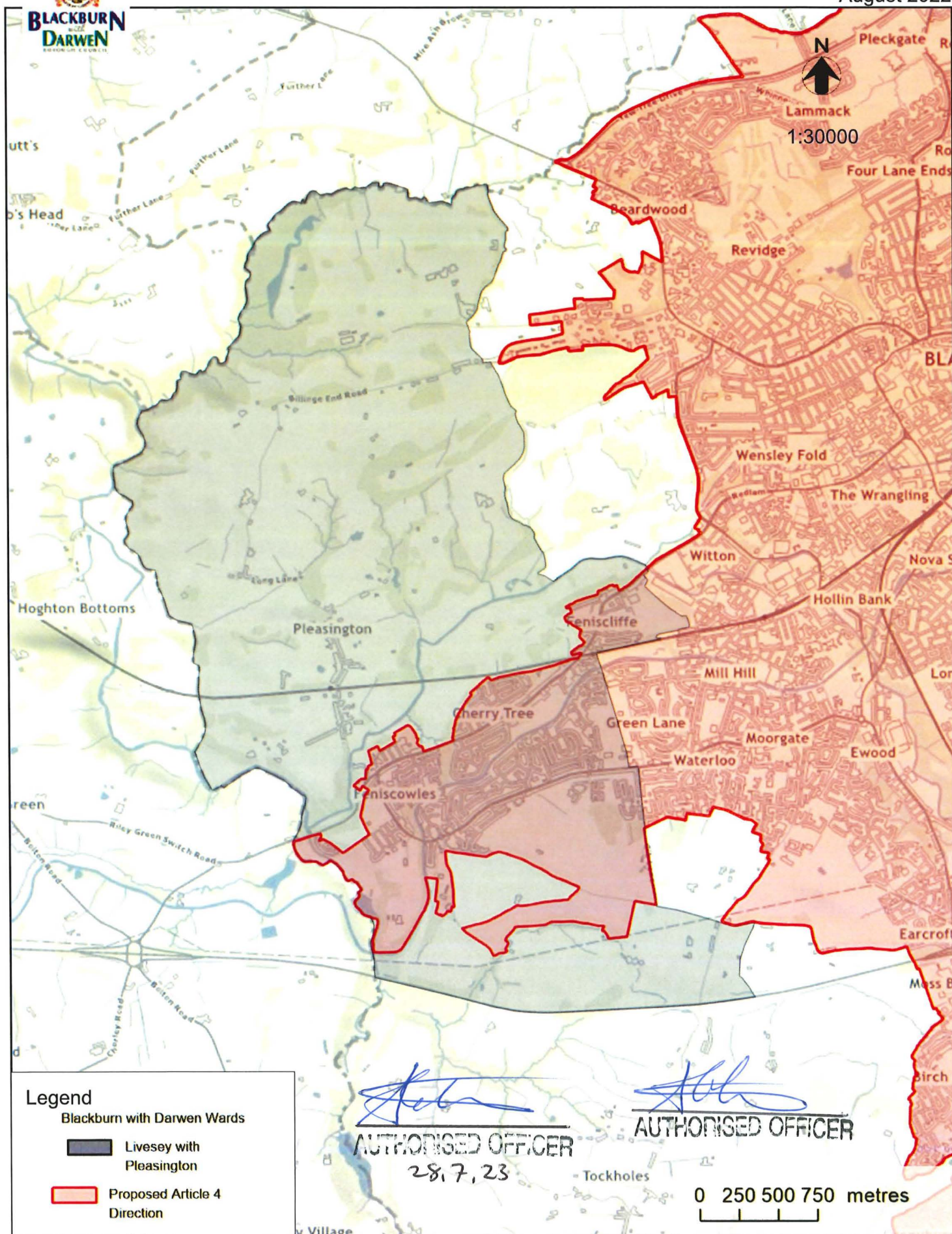
Blackburn with Darwen Borough Council Proposed Article 4 Direction - Little Harwood & Whitebirk

August 2022





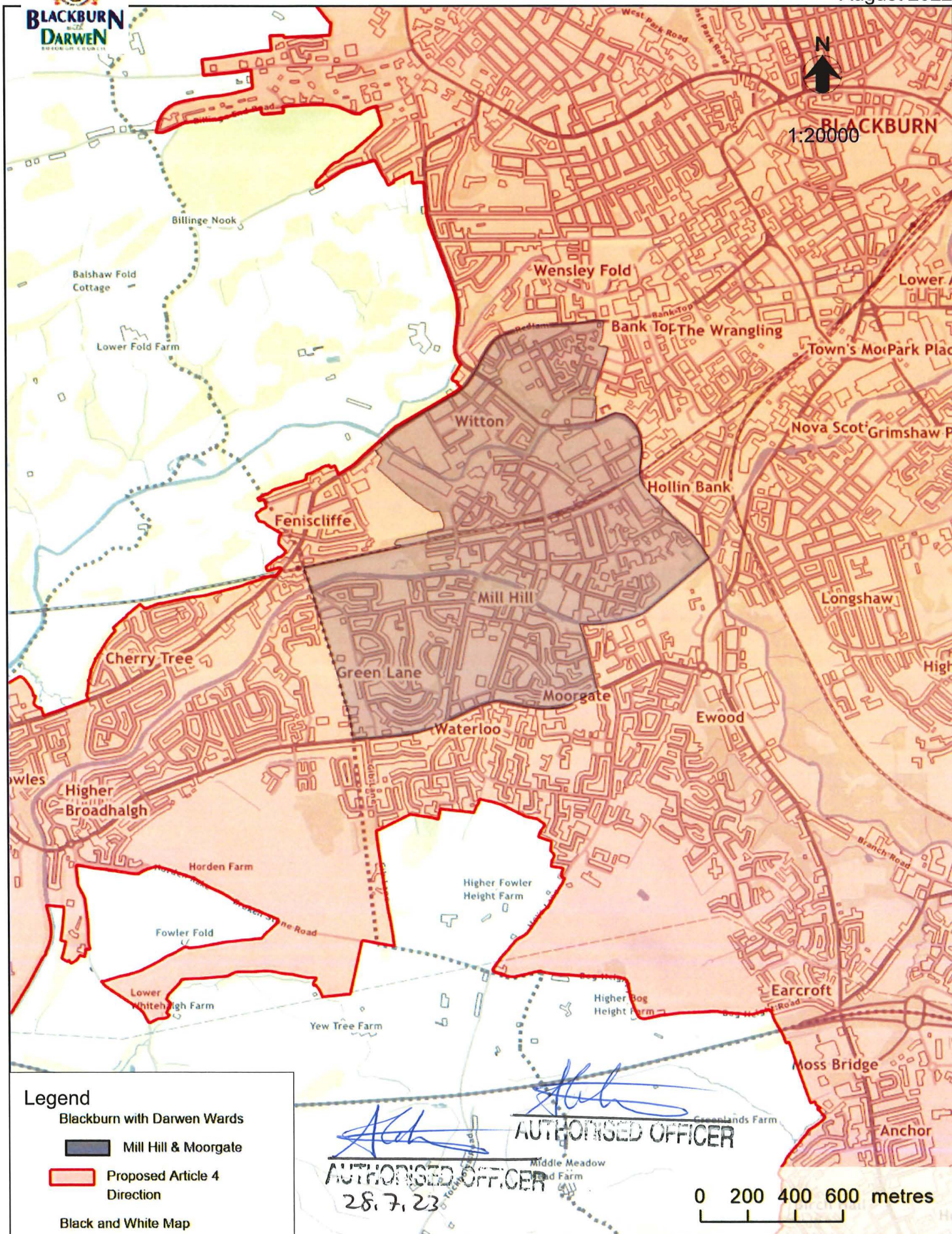
August 2022





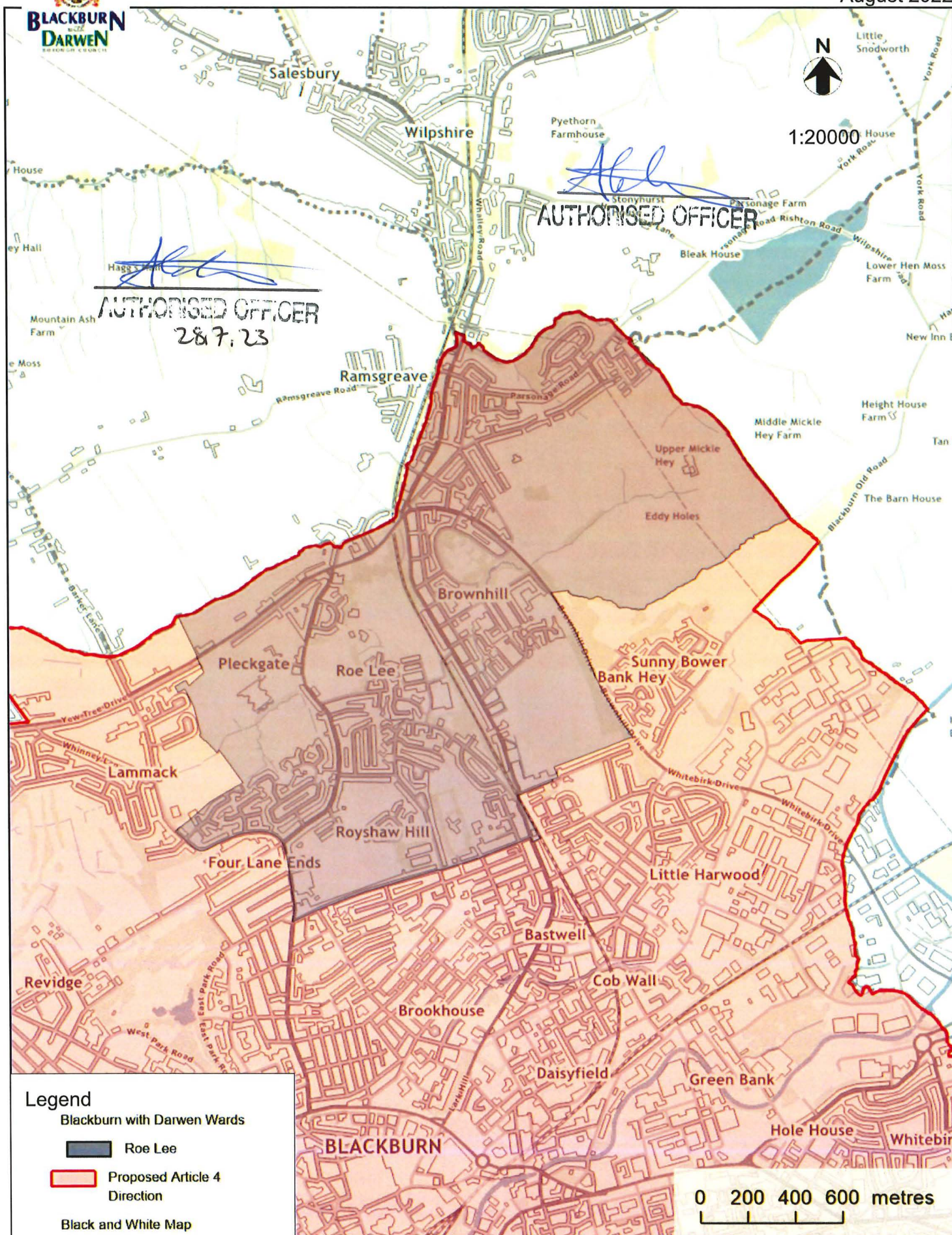
Blackburn with Darwen Borough Council Proposed Article 4 Direction - Mill Hill & Moorgate

August 2022



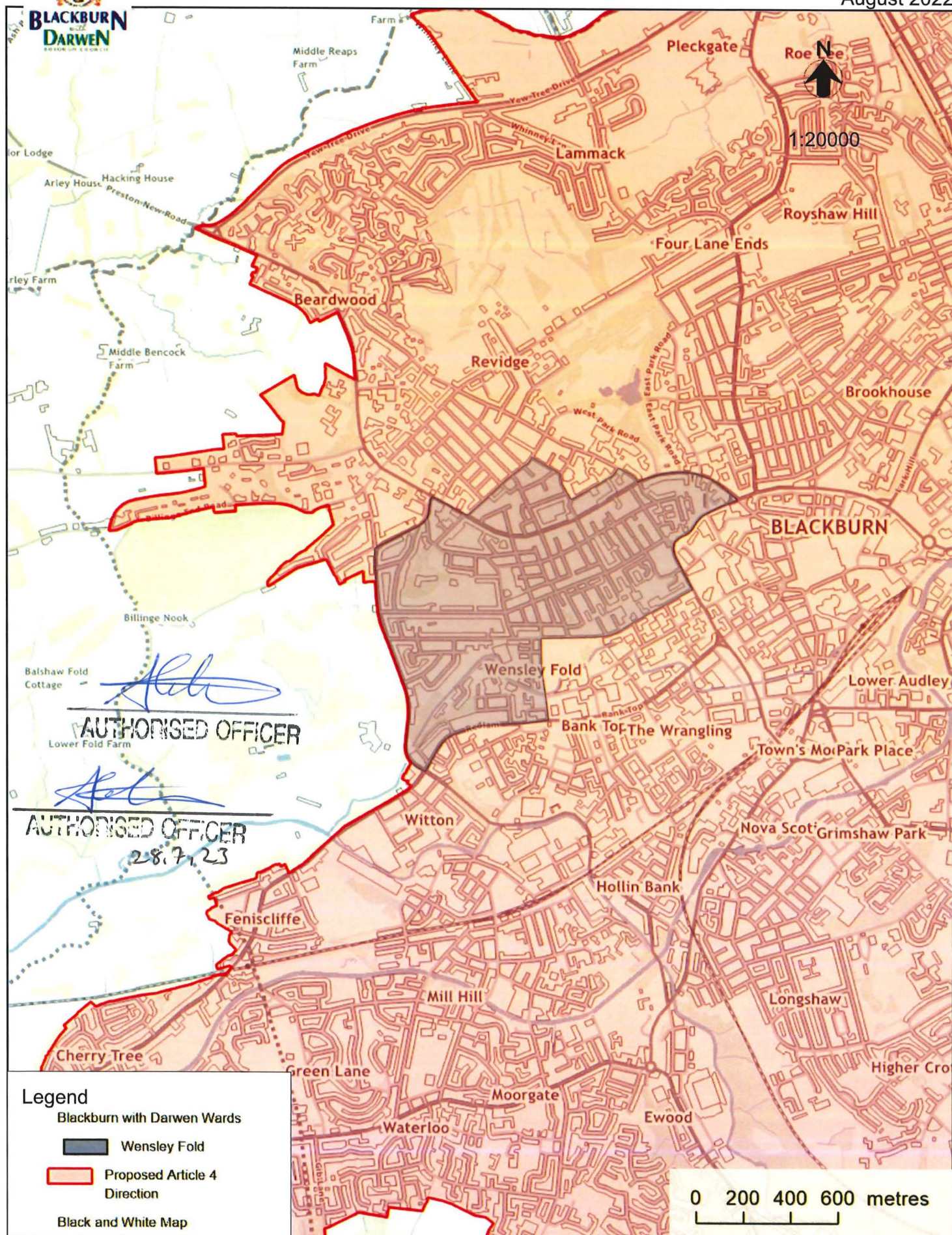


August 2022





August 2022





Blackburn with Darwen

Wensley Fold
The Wrangling
Witton
Mill Hill
Moorgate
Waterloo
Ewood
Hollin Bank
Nova Scotia
Longshaw
Higher Croft
Whinny Edge
Whinny Heights
Queen's Park
Park Place
Lower Audley
Higher Audley
Intack
Shadsworth
Blackmoor
Lower Darwen
Earcroft
Mass Bridge
Anchor
Birch Hall
Hollins
Hollins Grove
Sunnyhurst
Sneydy Fold
Shorey Bank
Belgrave
Sough
Spring Vale
Whitehall
Bull Hill
Whittlestone Head
Blacknape
Hoddlesden
Pickup Bank
Waterside
Eccleshill
Bank Fold
Belthorn
Guides
Stanley
Little Moor End
Ryall Fold

DARWEN

Legend

- Blackburn with Darwen Wards
- West Pennine
- Proposed Article 4 Direction
- Black and White Map

0 250 500 750 metres

1:40000

AUTHORISED OFFICER
28/7/23